

# SERIAL - ATA CARD BUS



# User Manual

## Version 1.1

### Introduction

Thank you for purchasing Serial-ATA CardBus. The Serial-ATA Controller adapter provides an inexpensive way for users to increase the speed or fault-tolerance of their Notebook. It can upgrade your Notebook to have dual Serial-ATA channels. It's fully compliant Serial-ATA ports on the device side to access Serial-ATA storage media such as hard disk, CD-RW / DVD-ROM, and external enclosure drives.

### Package Content

1. Hardware: Serial-ATA CardBus  
Serial-ATA cable x 1
2. CD Driver
3. User's Manual

### Product Features

1. 32bit CardBus fully compliant
2. Plug and Play compatibility
3. Serial ATA Specifications 1.0 compatible
4. Provides dual Serial ATA channels (up to 2 drives)
5. Burst rate reach maximum 1.5G
6. Supports Spread Spectrum in receiver
7. Support HDD larger than 137 GB

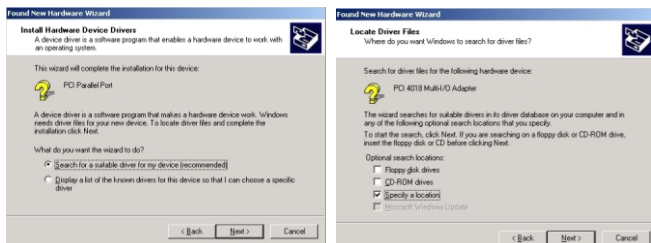
### System Requirements

1. Available Type-II CardBus slot
2. Serial-ATA drives
3. Serial-ATA cables
4. Windows 98SE / ME / NT4.0 / 2000 / XP

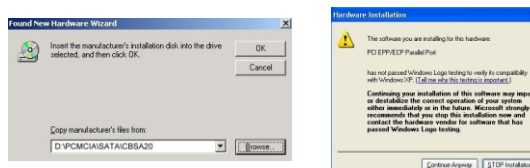
### Driver Installation (WIN NT4.0/2000/XP)

Follow the steps below on installing the Serial-ATA CradBus on an existing system:

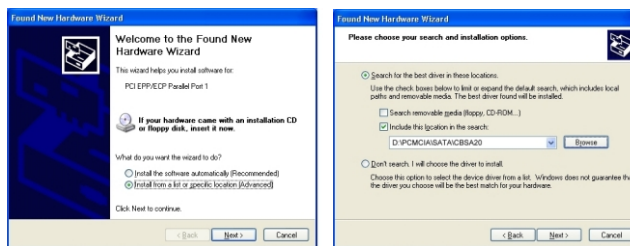
1. Insert the SATA CardBus adapter into an available Type-II CardBus slot. Connect serial-ATA cable(s) between the SATA CardBus and the Serial-ATA device(s).
2. Windows will display the "Found New Hardware Wizard". Click "Next". Please insert the CD driver into your CD-ROM.
3. Select "Search for a suitable driver for my device" and click "Next".
4. Please select "Specify a location" and click "Next".



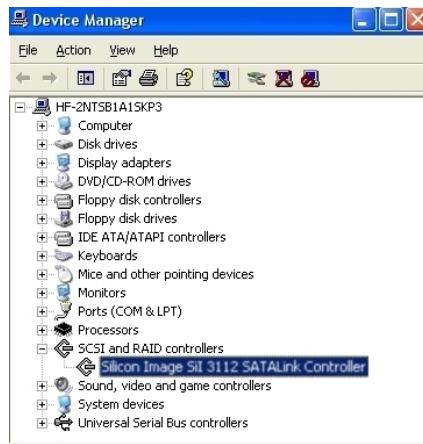
5. Click "Browser" to change the folder to your CD-ROM drive (D:\PCMCIA\SATA\CBSA20) and click "OK" to install driver. If the screen show up, please select "Continue Anyway" to install driver.



- \*You can see the below screen on Win XP, please follow the same step as above.
- A. Please select "Install from a list or specific location", and click "Next".
  - B. Select "Include this location in the search" and click "Browser" to change the folder to your CD-ROM drive (D:\PCMCIA\SATA\CBSA20) and click "Next".



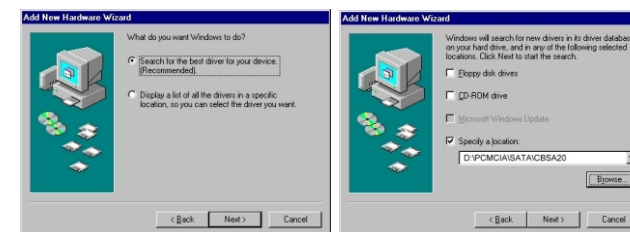
6. The wizard will now copy the required files to the system and start the driver. After starting the driver the wizard will display a completion dialog, click "Finish" to exit the wizard.
7. When Windows finished installing the software. You have to check the Control Panel-System-Hardware-Device Manager-SCSI and RAID Controller, it will show an "Silicon Image Sii 3112 Serial ATALink Controller"



### Driver Installation (WIN 98SE/ME)

Follow the steps below on installing the Serial-ATA CradBus on an existing system:

1. Insert the SATA CardBus adapter into an available Type-II CardBus slot. Connect serial-ATA cable(s) between the SATA CARDBUS and the serial-ATA device(s).
2. Windows will display the "Found New Hardware Wizard". Click "Next".
3. Please insert the CD driver into your CD-ROM.
4. Select "Search the best devices for your device" and click "Next".
5. Please select "Specify a location" and click "Browser" to change the folder to your CD-ROM drive (D:\PCMCIA\SATA\CBSA20) and click "Next" to continue.



7. The wizard will now copy the required files to the system and start the driver. After starting the driver the wizard will display a completion dialog, click "Finish" to exit the wizard.
8. When Windows finished installing the software. You have to check the Control Panel-System-Hardware-Device Manager-SCSI Controller, it will show an "Silicon Image Sii 3112 Serial ATALink Controller"

