

The background of the entire page is a light gray, stylized circuit board pattern. It features a complex network of lines representing traces, with various circular and rectangular shapes representing components or vias. The pattern is dense and covers the entire area.

USB 1.0 PCI Card

Version 1.0

User Manual



Contents

1.0 USB Port Features	P.3
2.0 System Requirement	P.3
3.0 Driver Limitations	P.3
4.0 Driver Installation (Windows XP)	P.4
5.0 Driver Installation (Windows 2000).....	P.5
6.0 Driver Installation (Windows ME).....	P.6
7.0 Driver Installation (Windows 98/98SE).....	P.7

Introduction

Add a USB device to your PC

Instantly add USB peripherals to your PC. Never open your computer case again after you have your USB Port (PCI) card installed and say good-bye to confusing cables.

The USB Port (Universal Serial Bus) allows you to instantly connect USB devices to your computer. The USB Port will allow you to attach 2/3/4 USB devices instantly.

You never have to worry about running out of slots in your computer or those confusing IRQ' s again. You can also "Hot Swap" your USB devices. What does this mean? You never have to power down your PC to install hardware again. Gamers can switch joysticks on the fly. Welcome to the USB Revolution.

1.0 USB Port Features

The PCI is a true 32-bit PCI-Bus USB card. It supports the following I/O features:

- ? Easy Plug and Play installation
- ? Auto detect speeds and connections of devices
- ? 12 Mbps and 1.5 Mbps data transfer rate
- ? Integrated physical layer transceivers
- ? Normal and low power operating modes
- ? Supports up to 127 * downstream USB devices (via USB hubs)
- ? OHCI (Open Host Controller Interface) specification V1.0 register compatible
- ? USB specification V.1.0 compatible

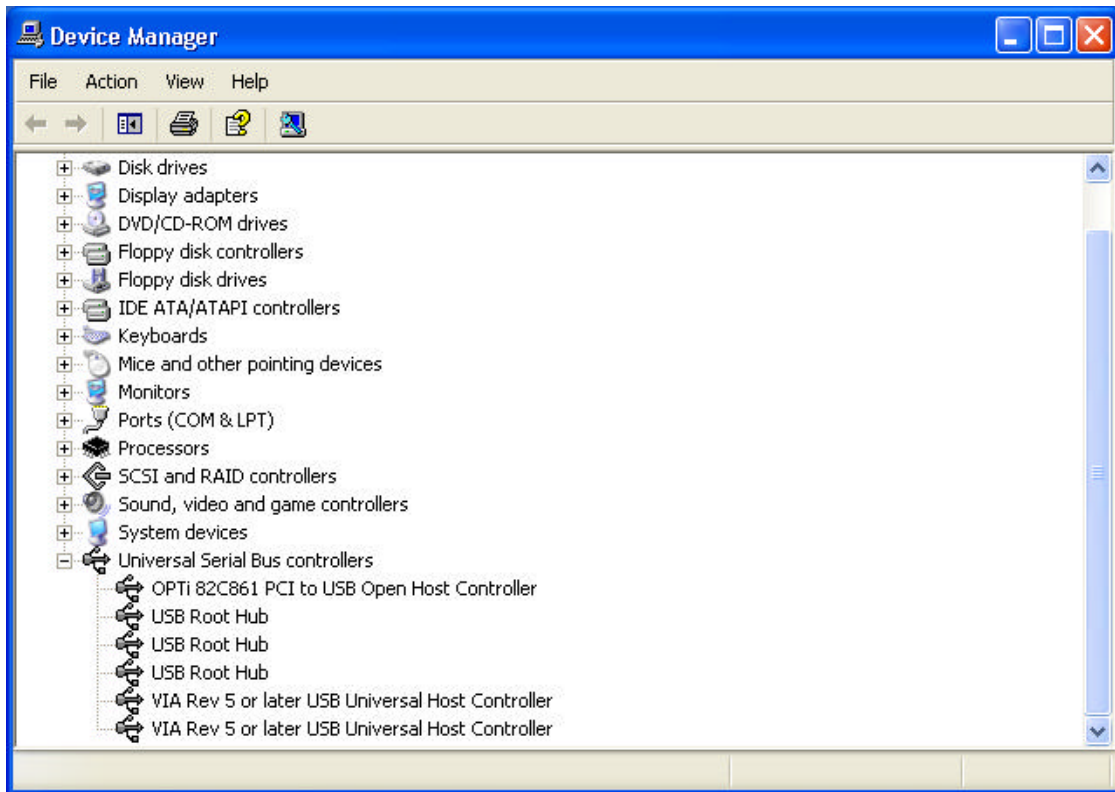
2.0 System Requirements

This card can be used either the following operating systems:

- ~~///~~ Windows98
- ~~///~~ Windows98 Second Edition.
- ~~///~~ Windows Millennium.
- ~~///~~ Windows 2000.
- ~~///~~ Windows XP.

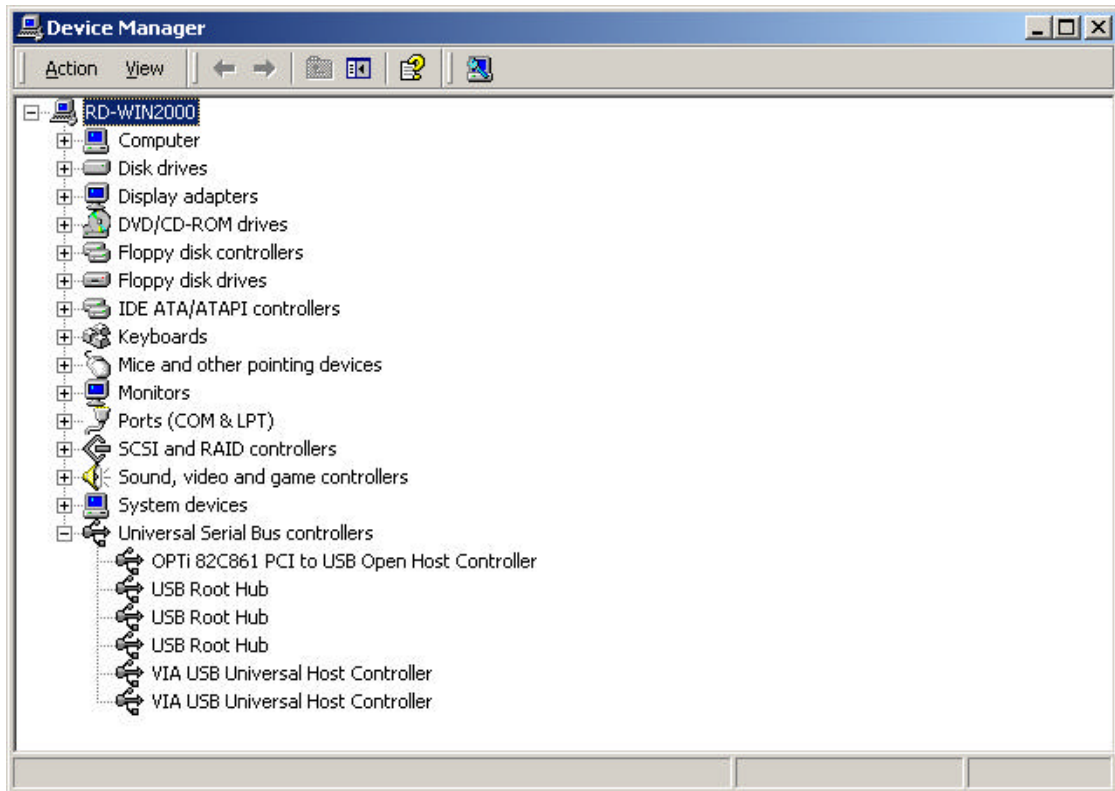
3. Driver Installation (Windows XP)

When you plug the card into to your system, Windows XP will detect the addition of new hardware and install files that it need. After few moments, the hardware can be used. You can check your 1394 card from “**Start My Computer (Click Mouse right button) Properties Hardware Device Manager**”.



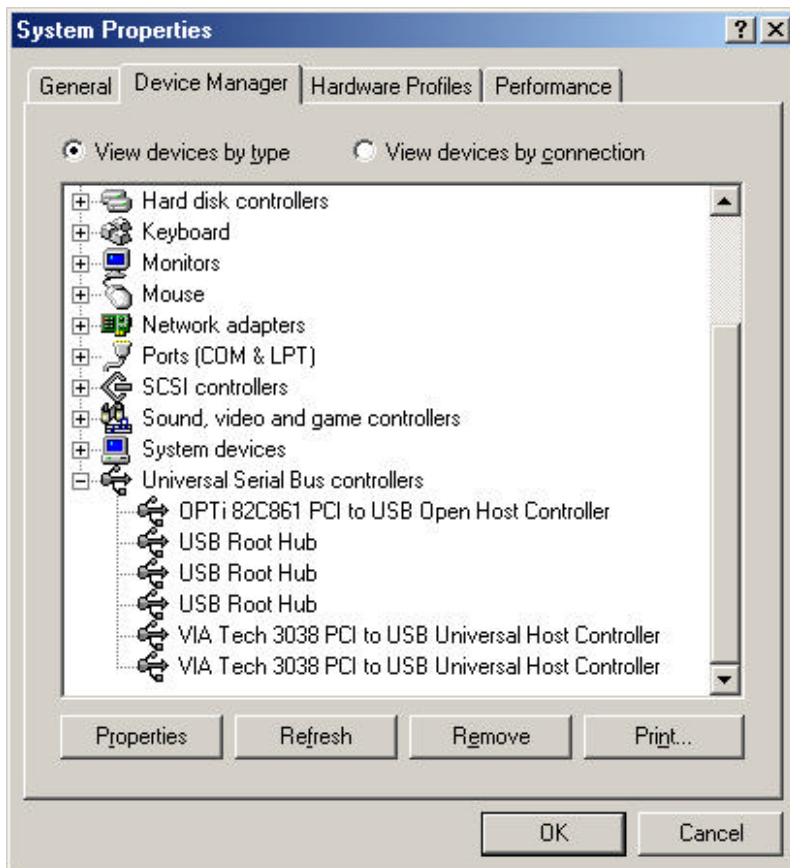
4.0 Driver Installation (Windows 2000)

When you plug the card into your system, Windows 2000 will detect the addition of new hardware and install files that it needs. After a few moments, the hardware can be used. You can check your 1394 card from “**Start My Computer (Click Mouse right button) Properties Hardware Device Manager**”.



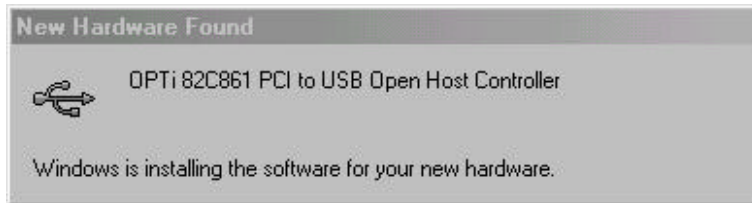
5.0 Driver Installation (Windows ME)

When you plug the card into your system, Windows Millennium will detect the addition of new hardware and install files that it need. It will restart the computer and after rebooting, the hardware can be used. You can check your 1394 card from “**Start My Computer** (Click Mouse right button) **Properties Device Manager**”.

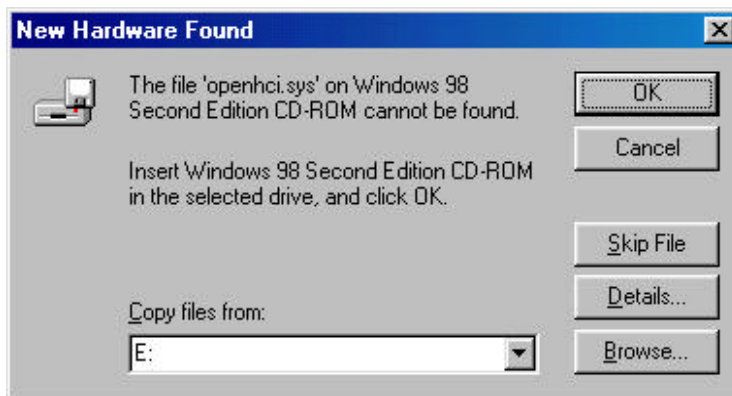


6.0 Driver Installation (Windows 98/98SE)

1. Windows 98/SE will detect the addition of new hardware and display the following message:



2. Insert your Windows 98/SE installation CD into your CD-ROM drive. Once you have inserted the CD-ROM into the CD drive, click "OK" button. This will start the software installation process.



3. After rebooting, click on the Device Manager tab in System Properties, which you access from the Windows Control Panel. You should see an entry for the driver you installed under the OPTi 82C861 PCI to USB Open Host Controller item. If the driver is not listed, please go back to Step 1 and reinstall the card.

